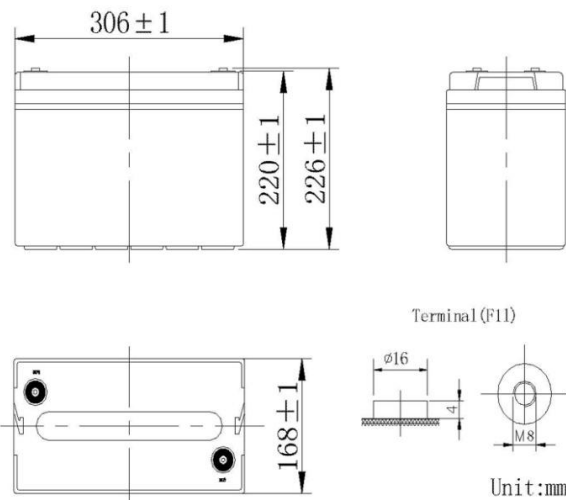


General Feature

- Absorbent Glass Mat(AGM) technology for efficient gas recombination of up to 99% and freedom from electrolyte maintenance or water adding.
- Not restricted for air transport-complies with IATA/ICAO Special Provision A67.
- UL-recognized component.
- Can be mounted in any orientation.
- Computer designed lead, calcium tin alloy grid for high power density.
- Long service life, float or cyclic applications.
- Maintenance-free operation.
- Low self discharge.

Battery Construction

| | | | | | | | | |
|--------------|----------------|----------------|-----------|-------|--------------|----------|------------|---------------|
| Component | Positive plate | Negative plate | Container | Cover | Safety valve | Terminal | Separator | Electrolyte |
| Raw material | Lead dioxide | Lead | ABS | ABS | Rubber | Copper | Fiberglass | Sulfuric acid |



SPECIFICATION

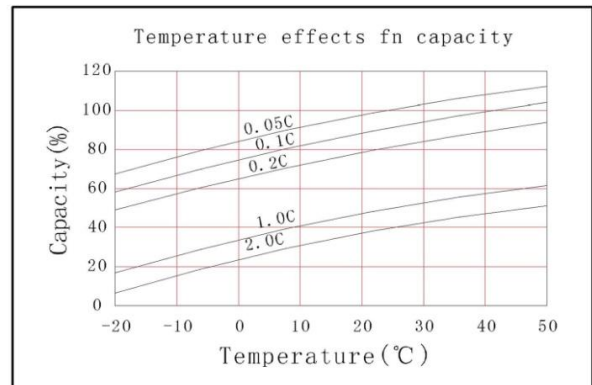
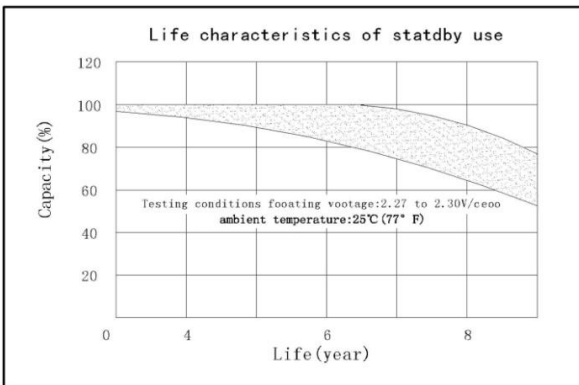
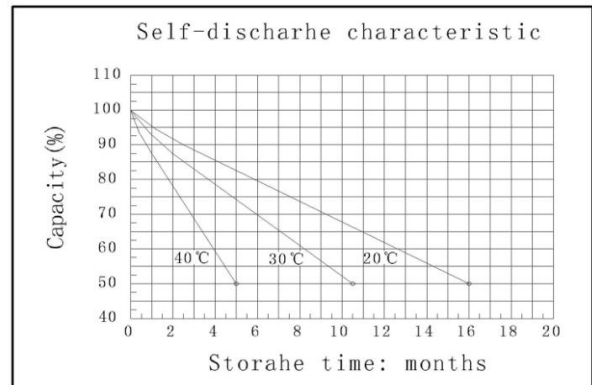
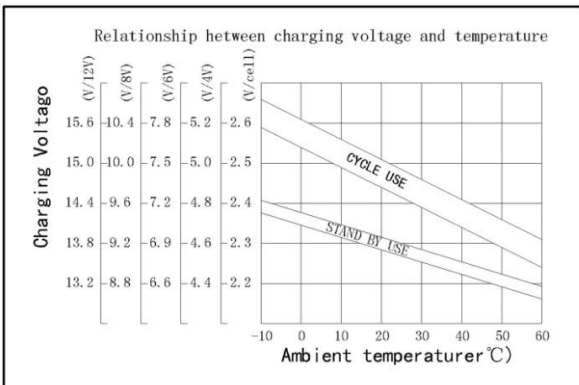
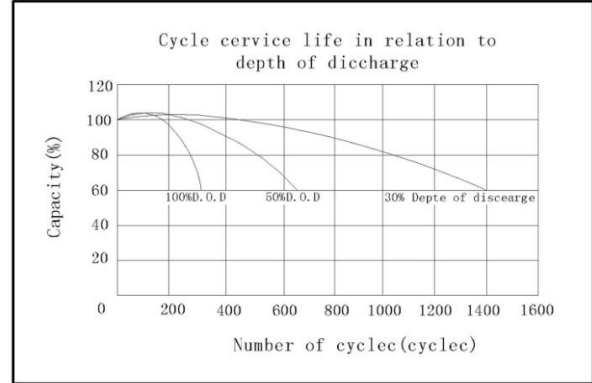
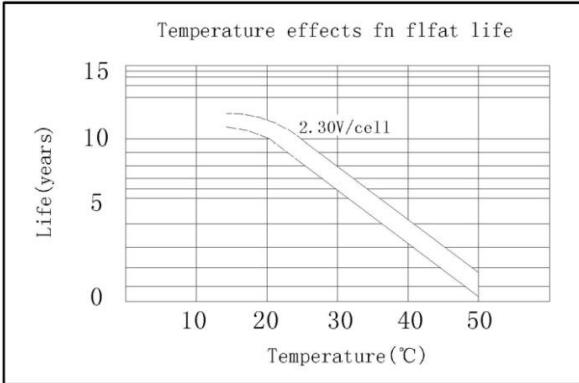
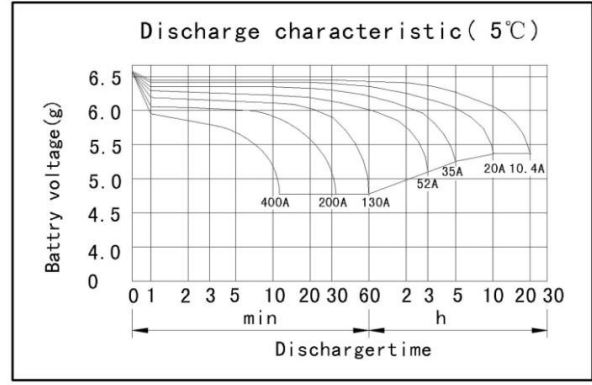
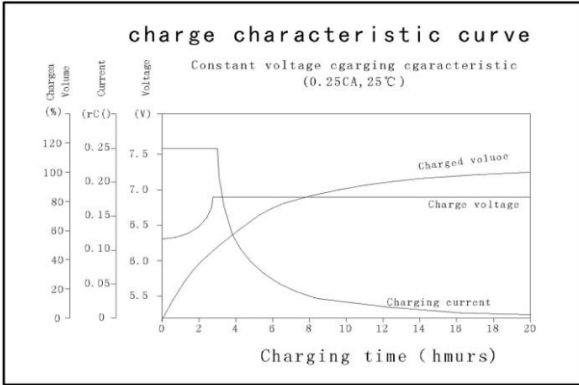
| | |
|------------------------|-----------|
| Nominal voltage | 6V |
| Number of cell | 3 |
| Length(mm/inch) | 306/12.1 |
| Width(mm/inch) | 168/6.61 |
| Height(mm/inch) | 220/8.66 |
| Total Height(mm/inch) | 226/8.90 |
| Approx. Weight(kg/lbs) | 28.3/62.4 |

Battery Construction

| | | | | | | | | |
|--------------|----------------|----------------|-----------|-------|--------------|----------|------------|---------------|
| Component | Positive plate | Negative plate | Container | Cover | Safety valve | Terminal | Separator | Electrolyte |
| Raw material | Lead dioxide | Lead | ABS | ABS | Rubber | Copper | Fiberglass | Sulfuric acid |

Performance Characteristics

| | | |
|-------------------------------------------------------|-------------------------------------|-------|
| Capacity 77°F(25°C) | 20 hours rate(10.4A 5.4V) | 208Ah |
| | 10 hours rate(20A 5.4V) | 200Ah |
| | 5 hours rate(35A 5.25V) | 175Ah |
| | 1 hour rate(130A 4.8V) | 130Ah |
| Internal Resistance | Full charged battery 77°F(25°C):4mΩ | |
| Capacity affected by Temperature (10 hour rate) | 104°F(40°C) | 102% |
| | 77°F(25°C) | 100% |
| | 32°F(10°C) | 85% |
| | 5°F(-15°C) | 65% |
| Self-Discharge 68°F(20°C) | Capacity after 3 month storage | 90% |
| | Capacity after 6 month storage | 80% |
| | Capacity after 12 month storage | 60% |
| Max discharge current 77°F(25°C):1000A(5S) | | |
| Charge (Constant Voltage) | Float:6.8 to 6.9V/77°F(25°C) | |
| | Cycle:7.25 to 7.45V/77°F(25°C) | |
| | Max Current:50A | |



Discharge Constant Current (Amperes at 77° F 25 °C)

| End Point Volts/cell | 5mih | 10mih | 15mih | 30mih | 1h | 3h | 5h | 10h | 20h |
|----------------------|------|-------|-------|-------|-----|------|------|------|------|
| 1.60V | 525 | 435 | 345 | 215 | 130 | 53.8 | 36.5 | 20.5 | 10.7 |
| 1.65V | 490 | 410 | 325 | 207 | 127 | 52.9 | 36.0 | 20.4 | 10.7 |
| 1.70V | 455 | 385 | 305 | 199 | 124 | 52.0 | 35.5 | 20.3 | 10.6 |
| 1.75V | 420 | 358 | 285 | 191 | 121 | 51.1 | 35.0 | 20.2 | 10.5 |
| 1.80V | 370 | 328 | 263 | 181 | 117 | 50.0 | 34.4 | 20.0 | 10.4 |

(Note)The above characteristics data are average values obtained Within three charge/discharge cycles not the minimum values.

Discharge Constant Power (watts at 77° F 25 °C)

| End Point Volts/cell | 5min | 10min | 15min | 30min | m5min | 1h | 2h | 3h | 5h |
|----------------------|------|-------|-------|-------|-------|-----|-----|------|-------|
| 1.60V | 865 | 715 | 578 | 378 | 271 | 250 | 137 | 97.9 | 70.7 |
| 1.65V | 819 | 680 | 559 | 36m | 265 | 2m5 | 135 | 96.6 | 70.1 |
| 1.70V | 773 | 6mm | 5m1 | 350 | 260 | 2m1 | 132 | 95.3 | 69.5 |
| 1.75V | 727 | 606 | 523 | 336 | 25m | 236 | 129 | 93.9 | 69.0 |
| 1.80V | 679 | 576 | m92 | 322 | 2m9 | 231 | 125 | 92.9 | 68. m |

(Note)The above characteristics data are average values obtained Within three charge/discharge cycles not the minimum values.